

ROTAPULS

Incremental encoders

series

ICS



ICS



www.lika.biz

- application info
- pinion + rack drawing

ENVIRONMENTAL SPECIFICATIONS

Shock:	100 g, 6 ms (acc. to MIL STD 202F)
Vibrations:	10 g, 5-2000 Hz (acc. to MIL STD 202F)
Operating temperature range:	-20°C +70°C (-4°F +158°F)
Storage temperature range:	-20°C +80°C (-4°F +176°F) (98% R.H.without condensation)
Protection:	IP65

MECHANICAL SPECIFICATIONS

Dimensions:	see drawing
Shaft:	Ø 12 mm
Shaft loading (axial and radial):	100 N max.
Shaft rotational speed:	6000 rpm max.
Starting torque at 20°C:	≤ 3 Ncm (typical)
Moment of inertia:	~250 gcm ²
Bearings life:	400x10 ⁶ rev. min. (10 ⁹ rev. min. with 20 N shaft loading max)
Weight:	~ 1,2 kg (42,3 oz)

ELECTRICAL SPECIFICATIONS

STD pulse rate (other PPR upon request):	2-4-5-6-10-12-15-16-18-20-24-25-30-35-36-39 40-45-50-60-64-70-80-90-100-120-122-125-127 142-150-180-200-216-236-240-250-254-256 267-270-300-314-360-375-400-410-433-435 471-500-512-600-625-628-635-720-750-784 800-875-900-946-1000-1024-1068
Pulses/mm:	to be result of pinion and rack ratio
Power supply:	+5V±5%, +10V +30V,+5V +30V
Output circuits:	NPN o.c., PNP o.c., Push-Pull, Line Driver, PP/LD
Output current (per channel):	40 mA max.
Output frequency:	60 kHz max.
Input current:	70 mA max.
Protection:	against inversion of polarity (except +5V version) outputs are protected against short-circuit (except Line Driver version)
Optoelectronic life:	100.000 hrs min.

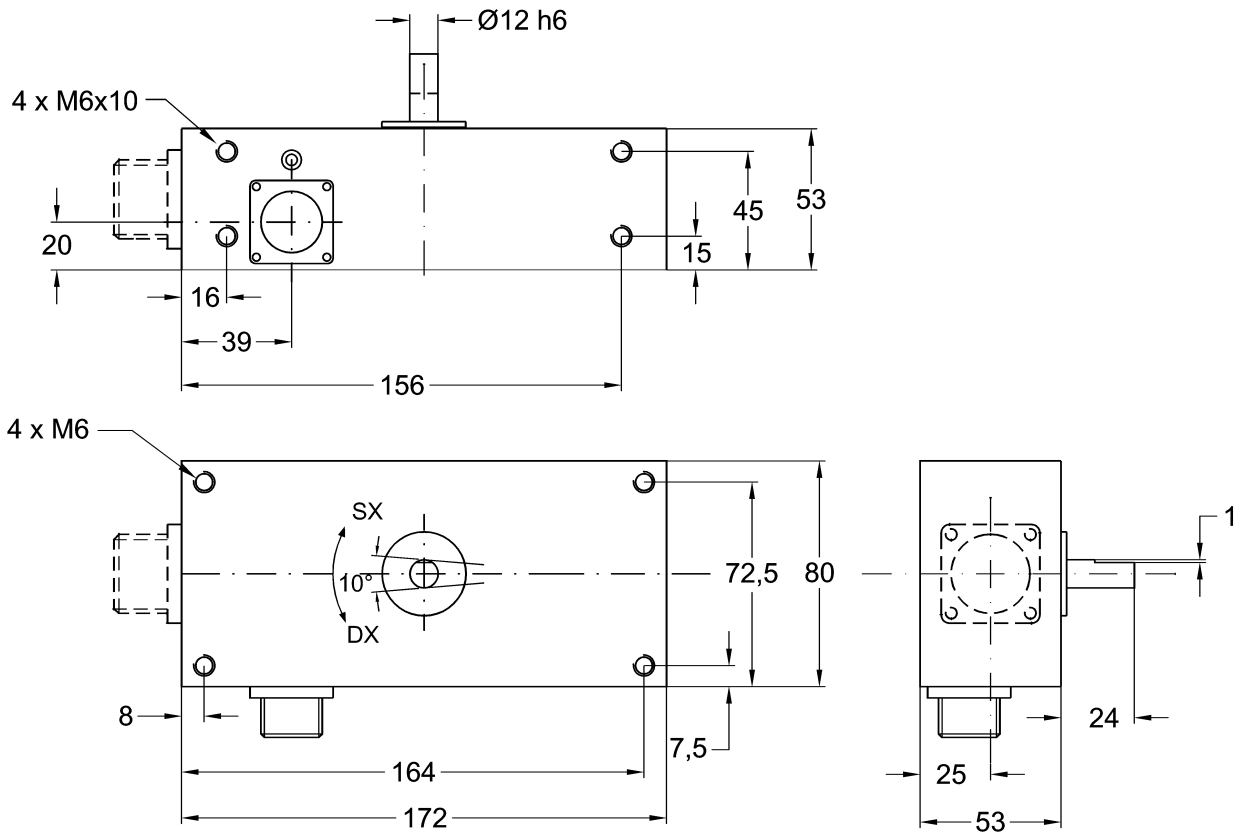
MATERIALS

Housing:	non corroding
Bearings:	ABEC 5
Shaft:	stainless steel, non-magnetic
Light source:	GaAl diodes

ACCESSORIES

E7MLS:	7 pin MIL mating connector
E10MLS:	10 pin MIL mating connector
LKM-1225:	Z40 pinion
LKM-1224:	M0,79 rack

Specifications subject to changes without prior notice



ICS

ORDERING CODE

ADDITIONAL CODE (indicate only if necessary)

