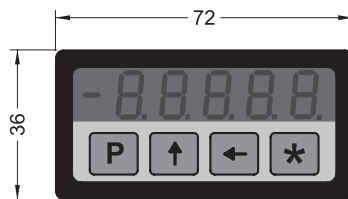
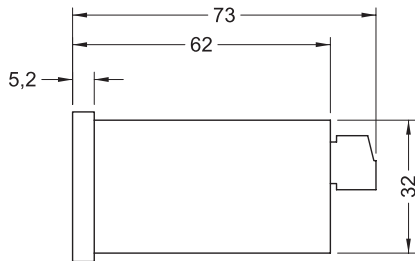


series

LD120



LD120 + SM5

- Compact LED display for magnetic sensors
- RS485 interface
- Panel mount
- Resolution up to 0.01 mm

PARAMETERS

3 Offset values, preset, resolution, decimal point, mm/inch, counting direction

ENVIRONMENTAL SPECIFICATIONS

Operating temperature range: 0°C ÷ +50°C (+32°F, +122°F)
 Storage temperature range: -20°C ÷ +80°C (-4°F, +176°F)
 Protection: IP60 front, IP40 back

MECHANICAL SPECIFICATIONS

Dimensions: 72 x 36 x 62 mm
 Cut out: 68 x 33 mm²
 Display: LED, 10 mm (-99999 ÷ 99999)

ELECTRICAL SPECIFICATIONS

Power supply: +10Vdc ÷ +30Vdc
 Consumption: 800 mW
 Measurement speed: <5 m/s max.
 Input circuit: SM5 Magnetic sensor
 Interface: RS485 (optional)

ACCESSORIES

SM5: Magnetic sensor
 MT50: Magnetic tape
 PS1: Protection profile

ORDERING CODE

