

POSICONTROL

Single axis LED position display

lika

series

LD200



- Universal position display
- Incremental, 1Vpp and SSI input
- Easy parameter set-up
- 500 kHz counting frequency
- RS232 interface



LD200



www.lika.biz

- Data-sheet
- User manual
- Set-up software

PARAMETERS

Display mode: mm/inch/fractional, angular, offset value, preset, resolution and decimal point

ENVIRONMENTAL SPECIFICATIONS

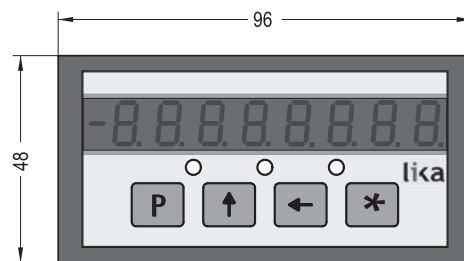
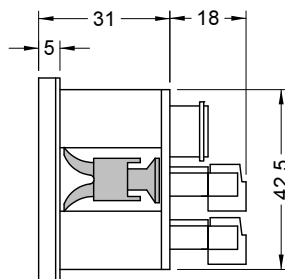
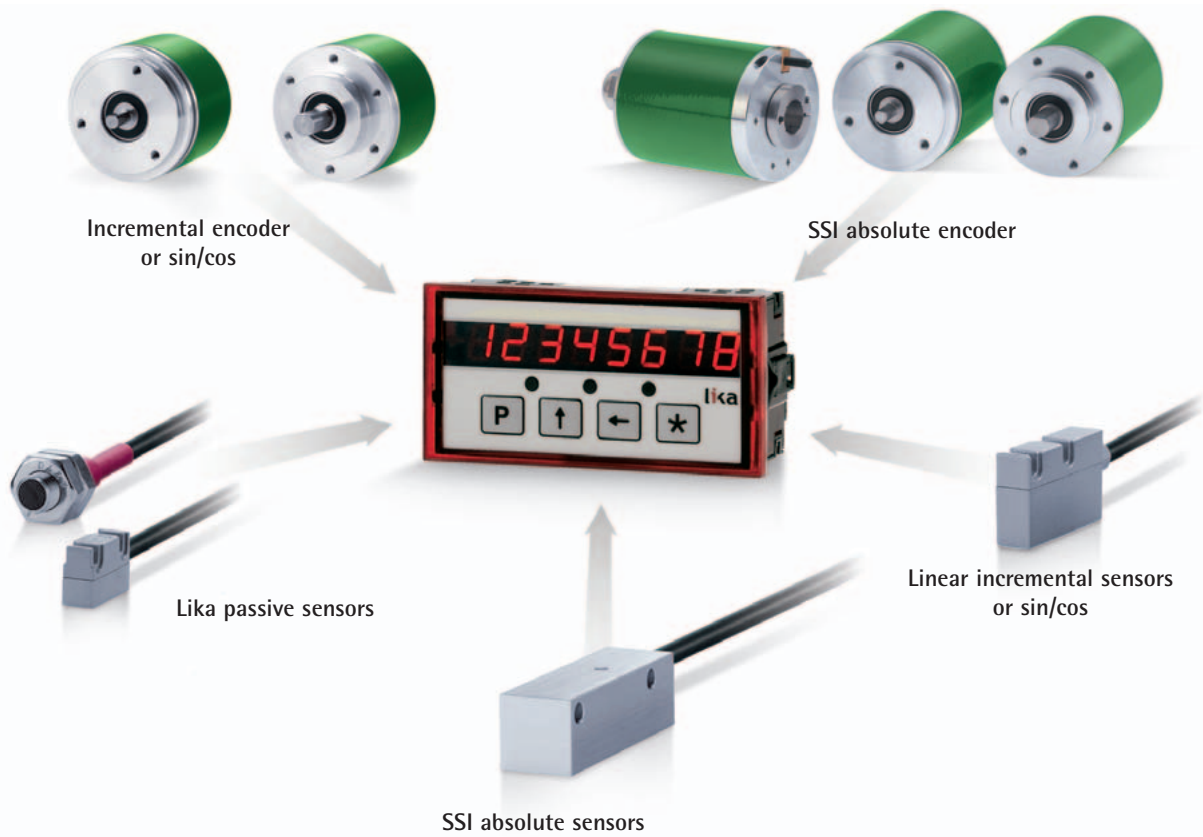
Operating temperature range:	0°C +70°C (+32°F, +158°F)
Storage temperature range:	-20°C +80°C (-4°F, +176°F)
Protection:	IP53 front, IP20 back

MECHANICAL SPECIFICATIONS

Dimensions:	96 x 48 x 69 mm ³
Cut out:	90 x 44 mm ²
Display:	LED, 8 digits x 10 mm (-99999999 ÷ 99999999)

ELECTRICAL SPECIFICATIONS

Power supply:	24Vdc ± 20%
Consumption:	4,5 W
Counting frequency:	500 kHz max.
Input circuits:	Push-Pull, Line Driver, 1Vpp SSI absolute encoder, SMx magnetic sensor
Interface:	RS232
Outputs:	3 x 24V @ 23 mA max.



ORDERING CODE

