

LINEPULS

Magnetic rings

series

MRI/xxx



- Modular, flexible and robust encoder ring systems in combination with magnetic sensors
- Custom specific designs available up to 600 mm outside diameter



MRI/xxx



ENVIRONMENTAL SPECIFICATIONS

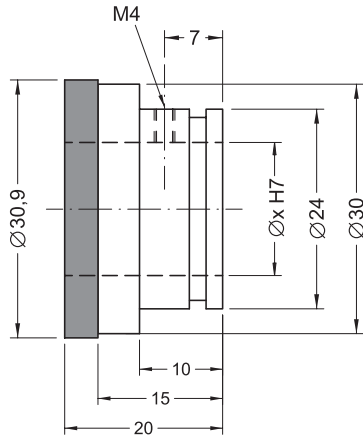
Operating temperature range:	-40°C ÷ +120°C (-40°F +248°F)
Storage temperature range:	-40°C ÷ +120°C (-40°F +248°F)
Protection:	IP67

MECHANICAL SPECIFICATIONS

Dimensions:	see drawing
Ring support:	Aluminium or steel
Rotational speed:	MRI/31, MRI/48 = 20000 rpm max. MRI/114, MRI/284 = 1500 rpm max.
Magnetic poles:	see ordering code
System accuracy:	± 0,1°
Repeatability:	±1 increment

ACCESSORIES

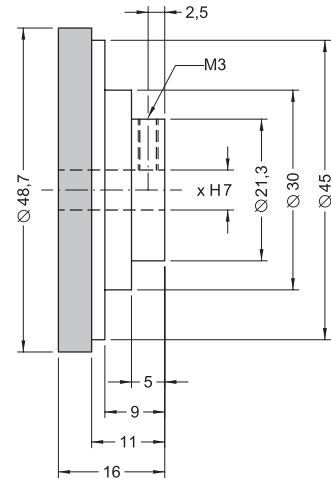
SME2:	Magnetic sensor
SME1:	Magnetic sensor
SME5:	Magnetic sensor
SMS:	Magnetic sensor
SMX:	Magnetic sensor



MRI/31

ORDERING CODE

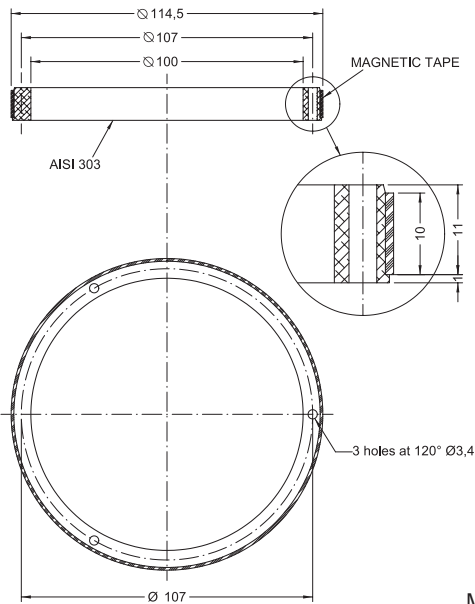
XXX	-	XX	-	XX	
SERIES					
MRI/31					
MAGNETIC POLES/PITCH					SHAFT-Ø
48 Pole/poli @ 2 mm		48-2		16	16 mm
20 Pole/poli @ 5 mm		20-5		19	19 mm



MRI/48

ORDERING CODE

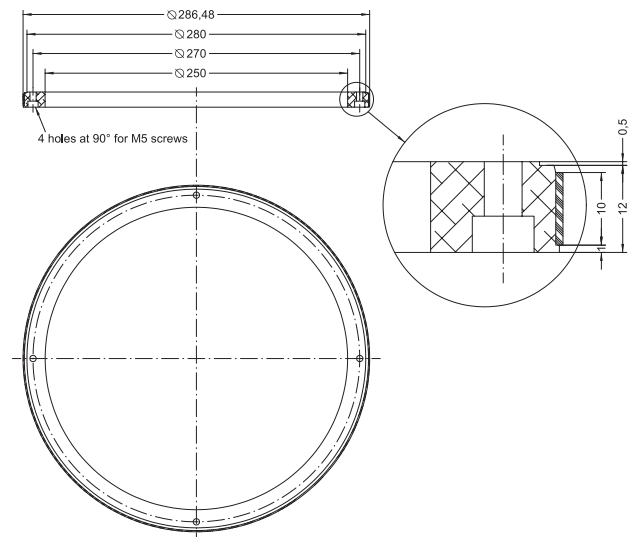
XXX	-	XX	-	X	
SERIES					
MRI/48					
MAGNETIC POLES/PITCH					SHAFT-Ø
32 Pole/poli @ 5 mm		32-5		6	6 mm



MRI/114

ORDERING CODE

XXX	-	XX	-	XXX	
SERIES					
MRI/114					
MAGNETIC POLES/PITCH					SHAFT-Ø
72 Pole/poli @ 5 mm		72-5		100	100 mm
182 Pole/poli @ 2 mm		182-2			



MRI/284

ORDERING CODE

XXX	-	XX	-	XXX	
SERIES					
MRI/284					
MAGNETIC POLES/PITCH					SHAFT-Ø
900 Pole/poli @ 1 mm		900-1		250	250 mm
450 Pole/poli @ 2 mm		450-2			
180 Pole/poli @ 5 mm		180-5			